



Protocol For Establishment and Maintenance of Pancreas Tumor-Derived Organoids

The following protocol is optimized for generating Patient-Derived tumor Organoid (PDO) cultures directly from surgical resections of Cancer or Patient-derived xenografts. Please refer to organ-specific media conditions shared as separate files.

We usually achieve about 70 - 90% success in establishing organoid cultures when starting with surgical resections of human tumors and a greater than 90% success rate starting from patient-derived xenograft (PDX)-derived tumors. Important factors contributing to success are the amount of input tissue and the tumor cell content in the tissue. Tumor chunks larger than 1.0 cm³ will increase the chance of success, whereas smaller chunks will give variable results. In addition, the tumor cell content is also a critical determinant of success; if the tumor chunk is primarily stroma-rich, it will negatively affect the ability to generate organoid cultures.

The initial organoid culture that develops after the plating of the processed tissue should be referred to as Passage 0 (P0). All subsequent passages (where there is an expansion of cells or simply performing a 1:1 split) should be serially numbered, and records should be maintained for each passage. Once the cultures are proliferating and increasing in cell number between passages, we recommend freezing down early passage cultures before using them for experiments. Once thawed from a cryopreserved vial of healthy PDO, we typically do not use cultures older than P20 for experiments for concerns related to culture-induced genetic drift.

Published in PMID: 26501191

For media:

- *We prepare master cocktail pre-mix and store them in small aliquots for extended periods of time (6 months).*
- *The master cocktail pre-mix is diluted in cell culture media with antibiotics and stored at 4 degrees for short-term use (~1 month).*

Just before every use, we prepare 'growth media' that contains 5% Matrigel.

Materials Needed and Growth Factor Cocktails

Materials	Vendor	Catalog #
------------------	---------------	------------------





Collagenase/Dispase(100 mg/ml)	Sigma	11097113001
Accutase	Sigma	A6964
DMEM+ Glutamax	Thermo	10564029
DMEM	Thermo	11965118
Rock Inhibitor (Y267632)	Tocris	1254
Matrigel (Growth factor reduced) (Concentration ~10.5mg/ml)	BD	354230
Penicillin-Streptomycin 10,000 U/mL	Gibco	15140-122
Bovine Serum Albumin Heat shock fraction	Sigma	A7906
Growth Media	See recipe below	
PTOM	See recipe below	
Tissue strainer (250µm)	Thermo	87791
Wnt 3A	R&D	5036-WN-010
Freezing media (Cryostar cs10)	Stem Cell Tech	7930

PTOM cocktail recipe

Supplements/Growth factors	Vendor	Catalog #	Final concentration
Reagent A – (See note below)			





1	Bovine Pituitary Extract (BPE)	Hammond cell tech	1078-NZ	0.4ml for 100ml
2	B27	Thermo	17504001	1.0 ml for 100ml
3	Recombinant Human FGF 2-Basic (FGF2)	Peprotech	AF-100- 18B	10ng/ml
4	Recombinant Human FGF10	Peprotech	100-26	10ng/ml
5	Recombinant Human EGF	Peprotech	AF-100-15	5ng/ml
6	Recombinant Human IGF	Peprotech	100-11	10ng/ml
7	Human Insulin	Sigma	I2643-250MG	10ug/ml
Reagent B – (See note below)				
	Hydrocortisone	Sigma	1316004-200Mg	0.5ug/ml

Note:

Aliquoting B27.

- a. Place the frozen B27 stock in a 4-degree fridge overnight.
- b. On the next day, gently invert the fully thawed B27 a few times and aliquot into 2.0 ml aliquots.
- c. Store the tubes in a -80 degree freezer.

Aliquoting BPE

1. Place the frozen BPE in 4-degree fridge overnight to thaw.
2. Incubate the fully thawed BPE in 37-degree water bath for one hour. This helps lipids in BPE to dissolve.
3. Transfer the 100 mL BPE into two 50 mL conical tubes and centrifuge at 2500 rpm for 5 minutes.
4. Use a 10 mL pipette to transfer the supernatant into two new 50 mL conical tubes. Discard the precipitates.
5. Aliquot BPE into 2.0 ml microcentrifuge tubes and store in a -80 freezer.

Growth Factors:

Prepare growth factor stock solutions as 1000x stocks following per manufacture's recommendation and store in 100 ul aliquots @ -80 degree C.





Hydrocortizone:

Prepare a 1000x stock and store in 100 ul aliquots at -80 degrees C

Media Recipes:

Digestion Media:

DMEM

1:100 dilution of 100mg/ml stock Collagenase/ Dispase

1.0 % Penicillin-streptomycin

Preparation Tip: Prepare only the needed amount, fresh just before use, and discard the unused portion of the media.

Resuspension Media:

DMEM

1.0 % Penicillin-streptomycin

1.0 % BSA

Preparation Tip: Add 1% BSA by weight to DMEM+1.0% Penicillin- streptomycin-containing media and stir to dissolve the BSA. Once dissolved, filter sterilize using a 0.2 μ filter and store at 4°C.

PTOM Growth Media:

DMEM w/ Glutamax: 100 ml

2.145 ml of Reagent A

50ul of Reagent B

1X Penicillin-streptomycin

Note: When making organoids from the following cancers, it is necessary to add Wnt 3A (25ng/ml):

- Colorectal Cancer
- Cholangio carcinoma
- Adrenocortical Carcinoma

Preparation Tip:

Add Reagent A to media and then add Reagent B. Do NOT mix Reagent A and Reagents B by themselves as the alcohol in Reagent B will denature the growth factors

After adding all ingredients, filter the media through a 0.2 μ filter

Store prepared media at 4°C for NO more than one month.

Culture Media (make fresh for immediate use):

PTOM growth media.

5.0 % GFR-Matrigel

10 μ M Y267632, Rock inhibitor (10mM, a 1000x stock). Rock inhibitor is prepared in sterile Phosphate



Buffered Saline.

Preparation Tip: Prepare fresh. You may premix PTOM growth media and ROCK inhibitor and keep on ice. Add Matrigel just before use. Discard unused portions of the media.

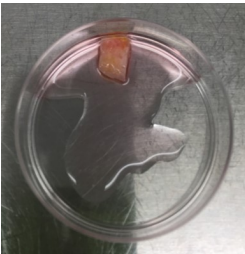
Freezing Media:

Cryostar freezing media

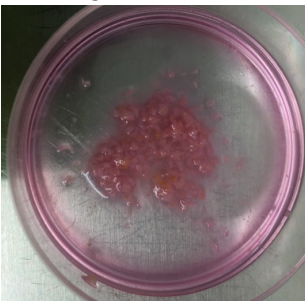
10 μ M Y267632, Rock inhibitor

PROCEDURE FOR PROCESSING TISSUES

1. Place the tumor tissue received from the surgery in a 35mm petri dish. You may choose to take a small section of the tissue and fix it for histology processing. And, another piece of the tissue can be snap frozen in liquid nitrogen for future use to isolate DNA/RNA. These are optional and will depend on the amount of surgical material received.
2. Add 1.0-3.0 ml of Resuspension media in the dish depending on the size of the tumor. It would be advisable to use the smallest amount of media possible (~1.0 ml), which would provide better control during the tissue mincing process.

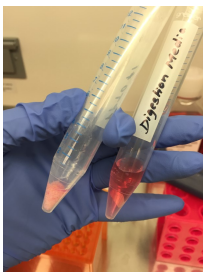


3. Mince tumor tissue with a sterile surgical scalpel (#21) into 0.5-1.0 mm fragments. It would be better to use two scalpel blades and move them in anti-parallel direction to generate a finely minced tissue preparation. Be careful to not apply too much pressure during this step, if you do, you will end up scraping the plastic from the 35mm tissue culture plate. When the process is complete, the tissue pulp should look like it is shown in the image below.



- Using a P1000 tip transfer the tissue pulp in to a 15.0 ml conical tube. You will not be able to collect all the tissue chunks using a regular P1000 tip, so use a fresh

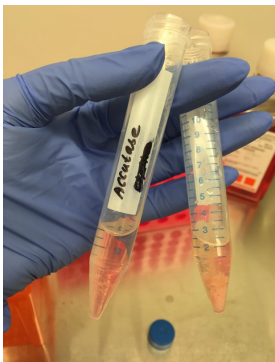
P1000 tip with its end cut to widen the bore. Add 1.0 ml of Resuspension media in a rinsing motion and transfer the digested tissue pulp to the 15.0 ml conical tube. Pellet the tissue suspension at 1500 rpm for 5 minutes at RT. Remove the supernatant carefully. Be aware the tissue pellet will not be firm so care should be taken to not disturb the tissue pellet. It would be advisable to first remove majority of the supernatant with a P1000 tip and then use a P200 tip to remove the remaining supernatant. See below for an image of the tissue pellet.



- Add 2.0 ml of Digestion media. Using a P1000 tip with a tip cut (for wide bore) gently re-suspend the tissue pellet and transfer the pellet to a fresh 35 mm tissue culture plate. Incubate in 37°C incubator for no more than 30 minutes. Check every 10 minutes for progress. After about 20 minutes you should be able to see a distinctive pink/purple hallow around the tissue chunks, when observed under a microscope.



- After 30 minutes, transfer the digested tissue slurry to a 15 ml conical tube. To remove all digested tissues, add an additional 2.0 ml of Resuspension media and transfer to the conical tube using a P1000 tip that has a wide bore, as performed above.
- Centrifuge at 1500 rpm for 5 minutes at RT.
- Aspirate the supernatant gently using a P1000 tip taking care not to disturb the pellet. Add 2.0 ml of Accutase to the pellet. Mix well using a P1000 tip with wide bore tip and incubate in a 37°C water bath or a tissue culture incubator for 30 minutes.

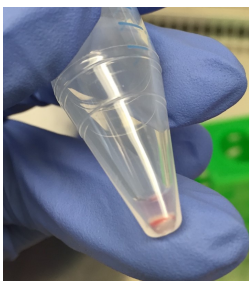


9. During the incubation period, you can prepare a well in a 12 well culture dish for plating the cells.
 - Coat 1 well of a 12 well plate with 150 μ l of Matrigel. To spread it evenly into a single layer, use a P200 pipet tip and as you release the Matrigel onto the surface of the well, move the tip in zig zag motion, keeping the space between the lines to a minimum. It is important that you do not eject all the Matrigel during this process, as you will tend to trap air bubbles. As you complete the zig zag motion from the top to bottom of the well, use the remaining few microliters of Matrigel to coat the circumference of the well with Matrigel. To check for the efficiency of Matrigel coating, you may want to hold the plate towards the light and look for any gaps in the coated surface. Once you are certain that you have evenly coated the Matrigel, move the plates to 37°C cell culture incubator and leave it there until the cells are ready to be seeded.
10. Remove the cells+Accutase tube from 37°C, add 1.0 ml of Resuspension media. Using a wide bore P1000 tip gently mix and transfer the tissue slurry to a tissue strainer mounted onto a 50.0 ml conical tube. Move the tip gently over the straind to allow the digested cells to flow-through and tissue debris to remain trapped on top. Add an additional 1.0 ml of Resuspension media to the top of the cell strainer while gently disturbing the debris to release any digested cells that may be trapped.

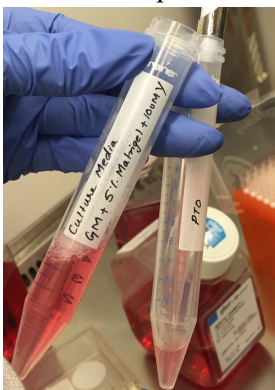


11. Centrifuge the flow-through at 1500 rpm for 5 minutes at RT. You should be able to observe a small but distinct pellet as shown below.





12. Gently resuspend the pellet in 2.0 ml of **freshly** prepared Culture media. You should not make Culture media with 5.0% Matrigel and let it sit on ice for long periods of time as it will result in sedimentation of the Matrigel. To save time, you may prepare Culture media without Matrigel and keep at RT until ready – just before you need to resuspend cells add 5% Matrigel and use immediately.



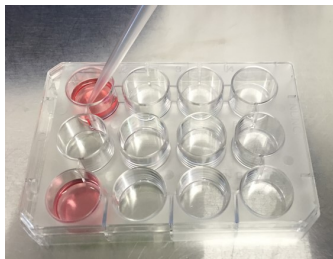
13. Gently, in drops, transfer the 2.0 ml of the resuspended cells to the Matrigel coated well in the 12 well dish. Be careful not to squirt the suspension as you will disturb the underlying Matrigel layer.
14. Monitor growth. You should take representative images every 4 days to document growth. These images can be used to determine growth rate by morphometric analysis.
15. Changing media. It is important to change media every 3-4 days. As noted earlier – Matrigel containing culture media must be prepared just before addition to the well to avoid sedimentation of the Matrigel.
16. Aspirate the old media gently using a P1000 tip, taking care not to disturb the Matrigel pellet or the Organoids. Add Matrigel containing Culture media to the well, gently, in drops. Take care not to add is too fast as it will disturb the organoids and the Matrigel layer.

PROCEDURE FOR MAINTAINING, PASSAGING, AND CRYOPRESERVING ORGANOID CULTURES

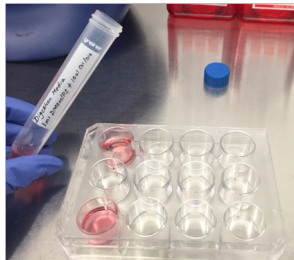
The time to passage the organoids can vary depending on the organoid line. In our experience we have found some PDO lines grow rapidly and are ready for passage by day 12-14, whereas other take much longer. In general, the time to passage is identified by culture that have stopped growing for more than 4 days.

The protocol below is optimized for 1 well of an organoid line in a 12 well plate

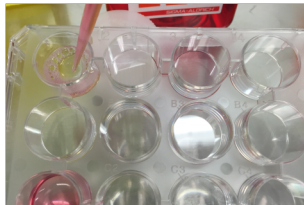
1. Aspirate the old media using a pipet tip. Do not use an aspirator. Be careful not to disturb the Matrigel layer or the organoids.



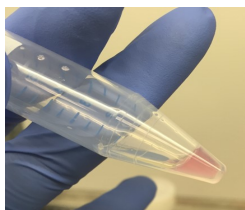
2. Add 0.5 ml/well Digestion media. Add gently and in drops, working close to the Matrigel surface to avoid generation of turbulence by the media being added.



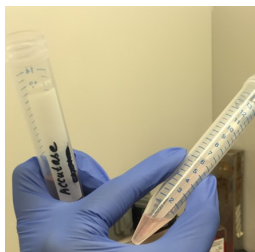
3. Incubate at 37°C for 1.5 hours. By 1.5 hours you should be able to observe the Matrigel digested into a pulp/slurry and the organoid dispersed into small clumps or clusters. This would indicate completion of the digestion. If these changes are not obvious, you could extend the digestion for another 30 minutes.
4. Re-suspend the cells by adding 1.0 ml of Resuspension media. The media can be cold, preferably not warmed to 37°C. Add the media in drops. Gently resuspend using a p1000 tip several times until the Matrigel is a smooth suspension and the organoids have dispersed into single cells or smaller clumps. Transfer it to a 15.0 ml conical tube.



5. Centrifuge at 1500 rpm for 5 min at RT. The pellet that contains Matrigel and cells, will not be prominent, can be only seen as a difference in texture and not necessarily as a difference in color. Remove the supernatant gently using a P100 tip. This is a very critical step as it is very easy to aspirate off the Matrigel/cell pellet. Pay attention to difference in consistency while removing. To be safe, you may choose to remove the supernatant in two stages – first remove ~1200 microlitres using P1000 and remove the rest using a P200 tip. The P200 tip will allow you to readily feel the difference in consistency between the supernatant and the Matrigel/cell pellet. The image below shows the Matrigel pellet with few microliters of the supernatant remaining.



6. Re-suspend the Matrigel pellet by adding 1ml of Accutase. Accutase comes as a 100.00 ml from the vendor. This should be aliquoted into smaller volume (1.0, 5.0 or 10.0 ml) to avoid repeated freeze-thaw. Pipette up and down until the Matrigel/cell pellet is resuspended into a smooth slurry (see image below).



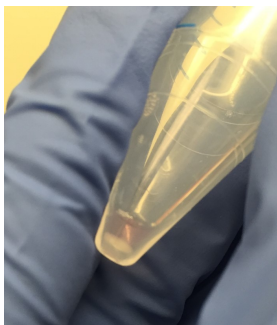
7. Incubate cells+accutase tubes at 37°C for 20-30 minutes.
8. During the above incubation period, prepare wells in a 12 well plate for reseeding cells. We typically split the culture at a ratio of 1:2 to 1:4. The choice of split ratio will depend on the growth rate (fast growing versus slow growing organoid lines) or other need for cells (part of the cells to used for isolating DNA/RNA or for cryopreservation). We have found that some lines grow very well and can be split at 1:4 ratio, whereas, some are slow growing and require a 1:2 split. It may be wise to perform a 1:2 split during the early passages until you become familiar with the organoid line.

Once your determine the split ratio, coat the required number of wells in a 12 well plate with 150 μ l of Matrigel. To spread it evenly into a single layer, use a P200 pipet tip and as you release the Matrigel onto

the surface of the well, move the tip in zig zag motion, keeping the space between the lines to a minimum. It is important that you do not eject all the Matrigel during this process, as you will tend to trap air bubbles. As you complete the zig zag motion from the top to bottom of the well, use the remaining few microliters of Matrigel to coat the circumference of the well with Matrigel. To check for the efficiency of Matrigel coating, you may want to hold the plate towards the light and look for any gaps in the coated surface. Once you are certain that you have evenly coated the Matrigel, move the plates to 37°C cell culture incubator and leave it there until the cells are ready to be seeded.

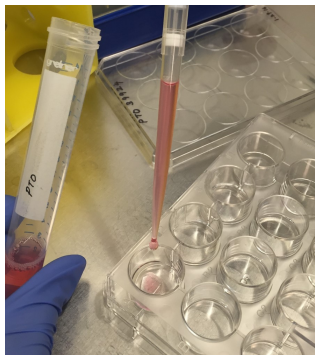
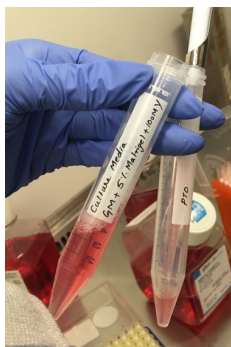
9. Remove the cells+accutase tubes from 37°C and add 500 μ l of Resuspension media. Gently pipette up and down to generate a smooth suspension of cells. Use a small aliquot to determine cell count in a coulter counter or hemocytometer. If you need cells for generating a cell pellet (for DNA/RNA isolation), an aliquot of this cell suspension can be used. It is also wise to freeze down (see below for details) as many vials of cells as possible during early passages to have stocks of early passage organoid cultures.

Once you have taken all the cells needed for generating a pellet or cryopreservation, pellet the rest of the cells at 1500 rpm for 5.0 minutes at RT. Aspirate the media using a P1000 tip and leave a few microliters of media to be safe to not disturb the cell pellet (see image below).



10. For Re-seeding:

- Prepare Culture media only just before you need and keep it on ice. It would not be advisable to add the 5.0% Matrigel to the media and let it sit for long periods of time as it will result in sedimentation of the Matrigel. You should also bring the Matrigel coated 12 well dish to the hood, so resuspended cells (see below) can be plated immediately.
- If you are re-seeding a defined number of cells per well, you can re-seed them at a density of 50,000 to 150,000 cells per well in a 12 well plate. The choice of cell number will depend on the organoid line, fast growing lines can be plated at lower density whereas slow-growing lines need to be plated at high density. Re-suspend pellet @ 1.0 ml of Culture media for each well of the 12 well dish. Gently resuspend the cells using a P1000 tip and plate them on the Matrigel coated well of the 12 well dish immediately.



- Changing media. It is important to change media every 3-4 days. As noted earlier – Matrigel containing culture media must be prepared just before addition to the well to avoid sedimentation of the Matrigel. You may choose to prepare Culture media without Matrigel, but containing ROCK inhibitor, and store it on ice until you are ready to add it to the culture dish.
 - Aspirate the old media gently using a P1000 tip, taking care not to disturb the Matrigel pellet or the Organoids. Add Matrigel containing Culture media to the well, gently, in drops. Take care not to add is too fast as it will disturb the organoids and the Matrigel layer.
 - You should take representative images every 4 days to document growth. These images can be used to determine growth rate by morphometric analysis.
11. Histogel blocks: This is an effective method to prepare tissue blocks of organoids that can be used for various immunohistochemical analysis. Having a bank of this histogel blocks from different organoid cultures can empower your discovery and validation studies.
- Prepare 4 well chamber slide. Coat 100 ul of Matrigel in each well of the slide. The procedure for spreading the Matrigel is the same as outlined above. Store the coated Chamber slide in 37°C cell culture incubator for a minimum of 20 minutes or until you are ready to plate the cells.
 - Re-suspend the cell pellet in 3.2 ml Culture media. Remember to follow the precautions in preparing Culture media with 5% Matrigel
 - Add, as drops, 800 ml of cells in culture media into each well of the chamber slide.
 - You may choose to stop culturing the cells at any point during the culture to prepare them for histogel blocks. Typically, we prepare histogel blocks prepared from cultures at different time points – days 4, 8, 12, 16 etc. during the early stages of our studies. For later studies, we tend to use a time point at which the organoids are fully developed.
12. Cryopreservation:
- Re-suspend pellet from step 9 in freshly prepared Freezing media
 - Freeze at 200,000 cells/ml @ 500 µl / 1.5 ml Cryotube



- Store at -80°C over night and transfer to liquid Nitrogen tank next day (within 24 hours of placing in -80°C)

